



Paida
Orphanage



ANNUAL REPORT 2015





PAIDA ORPHANAGE ANNUAL REPORT 2015



TABLE OF CONTENTS

1. Foreword	6
2. Purpose of this report	9
3. Who we are	10
a. Governance	12
b. Biographies	14
c. Aim of the organization	17
4. Progress update	18
5. Financial review	28
6. Outlook	31
7. Auditor's comments	32
8. Annexes	33
a. Detail of layout of the new school and orphanage constructions	33
b. Detail of estimates for school	34
c. Chronology of the construction	35
d. Names and pictures of sponsored children	36
e. List of children present in the orphanage on December 2015	38
9. Contacts	40

FOREWORD

In 2015, the North Kivu region continued to be plagued by the conflict. On one side, the Democratic Republic of the Congo ("DRC") military ("FARDC") and the Mission of the United Nations for the stabilization of the Democratic Republic of Congo ("MONUSCO"), on the other side mainly the Allied Democratic Forces ("ADF") as well as the Democratic Forces for the Liberation of Rwanda (FDLR). Unfortunately, it was again defenceless civilians who suffered the most. A local NGO reported more than 1'000 killed, another 1'400 forcefully abducted and more than 34'000 families forcefully displaced in Eastern DRC since May 2014.

Various military initiatives have created islands of improved stability in the North Kivu, but in order to maintain stability, it requires determined action to strengthen the civil society.

At PaidaOrphanage, we continue our efforts to strengthen the civil society by providing shelter to children and provide them with basic nutrition, health care and education.

After the evacuation of the orphanage in 2014, we were happy to see the children return to Paida in 2015 in order to go back to their familiar environment and regular school curriculum. One of the 9 children will have to repeat an academic year, but this is an acceptable price to pay compared to the potential loss of life had they remained in Beni.

The construction of the new school has also advanced and remains within the budget and far ahead of the schedule. With 4 class rooms and all sanitary installations completed and an administrative block for teachers and management almost finished, the school is now operational and had



three working classes hosting a total of 94 pupils in 2015. Unfortunately, our fundraising efforts in 2015 were less successful as we only rose approximately CHF 5'150 compared to CHF 15'300 in 2014.

Whereas we wish we could have been more successful in raising support for the construction of the school, we continue to be impressed and inspired by how successful our local partners manage the orphanage and the new school construction. Seeing the progress which is being made locally continues to inspire and motivate us.

Daniel Hoff
President
PaidaOrphanage

Marie-Laure de Quina
Vice-President
PaidaOrphanage







PURPOSE OF THIS REPORT

This report is directed towards sponsors, donors, beneficiaries, staff members and all other people interested in the activities of PaidarOrphanage. It gives an outline of the work of PaidarOrphanage and the progress we have made during 2015 to achieve our objectives.

WHO WE ARE

The orphanage was created in 1929 in the neighborhood of Paida, city of Beni in the Democratic Republic of the Congo ("DRC"). It is managed by Sisters from the order of the "Soeurs Oblates de l'Assomption" together with a hospital and a school.

In the summer of 2010, Marie-Laure de Quina and Daniel Hoff, visited the orphanage in the DRC. They were both moved and impressed by the work of the Sisters and decided to support them by creating the association "PaidaOrphanage" in Europe which was done in January 2011 in Switzerland.

The cooperation would be best described as a partnership between the order of the "Soeurs Oblates de l'Assomption" and the association PaidaOrphanage in Switzerland. The current objective of the association is to support the orphanage in Paida (DRC) and build a new school complex in Beni (DRC).



1. The orphanage building with the Rwenzori Mountain as surroundings



2. The inside of the orphanage with some of the children



3. The kitchen, dining area and playing area that was built in 2012 with the help of our donors



4. Part of the complex that comprises the orphanage, a school and a hospital

A) Governance

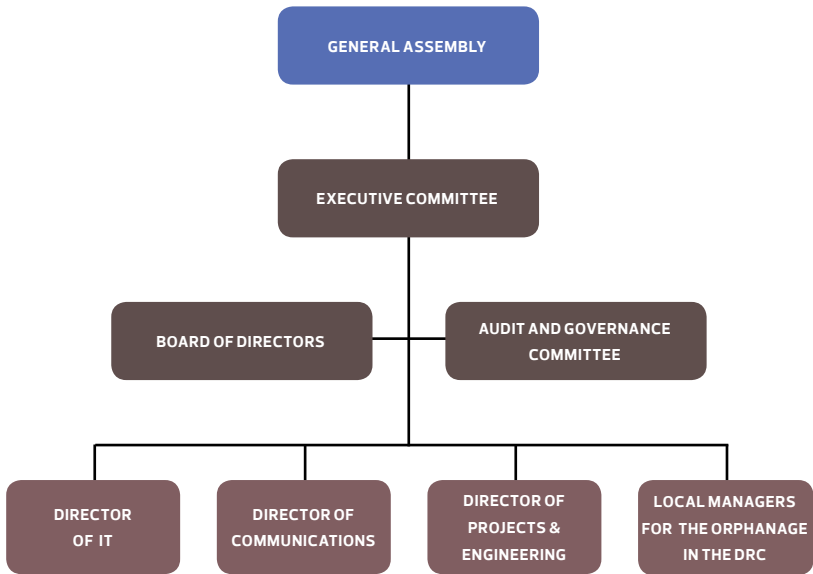
The highest level of governance of PaidaOrphanage is the General Assembly, which is constituted by all members of the organization.

The main governing body is the Board of Directors together with the Audit and Governance Committee.

The Executive Committee manages day-to-day business and is supported by the Director for Communication, the Director for IT, the Director for Projects and Engineering as well as the Local Managers for the Orphanage in the DRC.



5. Meeting of executive committee with three representatives of the Soeurs Oblates de l'Assomption in Paris



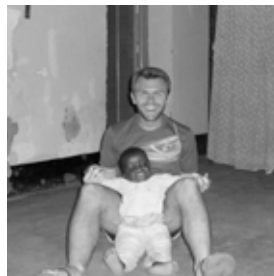
Board of Directors	Audit and Governance Committee	Executive Committee	Director of IT	Director of Projects & Engineering	Director of Communications	Local Responsible
Daniel Hoff		x				
Marie-Laure de Quina		x				
Martin Keller	x					
Delphine Menezes Cordeiro	x					
Josephine Mantombela						x
Patience Kahambu Tsavuliki						x
Ruben Nascimento			x			
Marc Suchet				x		
Maria Lecanda					x	

B) Biographies

Daniel Hoff [PRESIDENT]

I am a German national working in human resource management.

Relationship to PaidOrphanage: In 2010 I stayed for some months in the orphanage in Paida, building strong relationships with the Sisters who manage the orphanage and with the children. I was hugely impressed not only by the compassion of the Sisters, but also by their effectiveness and efficiency in managing the orphanage, despite of the minimal resources.



Marie-Laure de Quina [VICE-PRESIDENT]

I am a French national working in supply chain in the Humanitarian sector.

Relationship to PaidOrphanage: In 2010 I worked in the city of Beni as logistician for the International Committee of the Red Cross. During my time there, I decided to support the orphanage and learned to know and trust the orphanage and the Sisters managing it. I really believe in their work, in their honesty and in their will and dedication to improving the lives of these orphans.



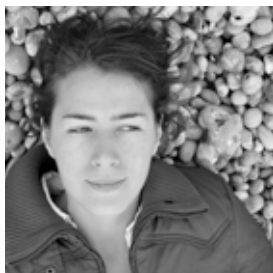
Ruben Nascimento [DIRECTOR OF IT]

I am a Portuguese national and have been a web designer and developer since 2003.

Relationship to PaidOrphanage: For PaidOrphanage, I am responsible for all online communications such as the



website and social media content. I have known Daniel Hoff for several years now and admire his and Marie-Laure's dedication to this orphanage. I passionately believe that with projects like this, it is possible to change our world by helping other people's lives, and I feel fulfilled by doing it.



María Lecanda [DIRECTOR OF COMMUNICATIONS]

I am a Mexican national, formed as an industrial designer and working as a professional photographer.

Relationship to PaidOrphanage: Since I met Daniel and Marie-Laure in 2012, I found their cause and their personal motivation to help the children of Paid Orphanage quite contagious. I am in charge of designing all printed media and some other means of communication (such as promotional video spots) with both sponsors and potential donors.



Marc Suchet [DIRECTOR OF PROJECTS AND ENGINEERING]

French, I am an engineer from the Special School of Public Works (Ecole Spéciale des Travaux Publics) in Paris.

Relationship to PaidOrphanage: Having visited PaidOrphanage several times with Marie-Laure and Daniel, I consider their project of support extraordinary. The orphanage is a place of serenity for the children. The peaceful atmosphere that exists there as well as the dedication of the Sisters who take care of it, in spite of the minimal means at their disposal, convinced me of the value of Marie-Laure and Daniel's project. I have

committed to them all my technical support to ensure a successful construction of the school.

Sister Joséphine [LOCAL RESPONSIBLE]

I was born in the Butembo area of the North Kivu and joined the "Soeurs Oblates de l'Assomption" when I was still young. When I met Marie-Laure and Daniel, I was responsible for the management of the orphanage in Paida. That included the management of the staff, the infrastructure and the various resources of the orphanage, i.e. some plots of land, the garden, livestock and the available financial means of the orphanage. As a member of our religious order, I also served as counsel for various activities, e.g. the management of a hospital and pharmacy, a school, the construction of a wedding hall to generate rental income etc..



Sister Patience [LOCAL RESPONSIBLE]

I am a native of Beni in the North Kivu and a member of the "Soeurs Oblates de l'Assomption". When meeting Marie-Laure and Daniel, I worked as a staff member in the orphanage in Paida. After recognizing the need to improve the reintegration of the children to their surviving families and the society, PaidaOrphanage sponsored my studies in Child Psychology in Goma. After concluding the studies in 2016, the plan for me is to take over the management of the orphanage in Paida.





AIMS OF THE ORGANIZATION AND PROGRESS UPDATE

In general, the purpose of the organization is to support schools in developing countries, in particular to provide access to basic education for the local population, especially children. Special attention is given to orphaned children. As far as possible, the association will also facilitate access to basic nutrition and promote health.

More specifically, PaidaOrphanage aims to build a school complex for at least 400 children, including an orphanage with the capacity to accommodate at least 50 orphans, in the city of Beni, district North Kivu in the DRC.

In order to achieve the aims of the organization, various projects have been established and some completed. Further information can be found at www.paidaorphanage.org.

The following projects are currently ongoing and have progressed in 2015:

SPONSORSHIP (previously "SPO") – Sponsor an orphan

BUNGULU (previously "ORP") – Creation of new orphanage and school complex

We present below an update of the progress made in 2015 for each of these projects.

PROJECT UPDATE

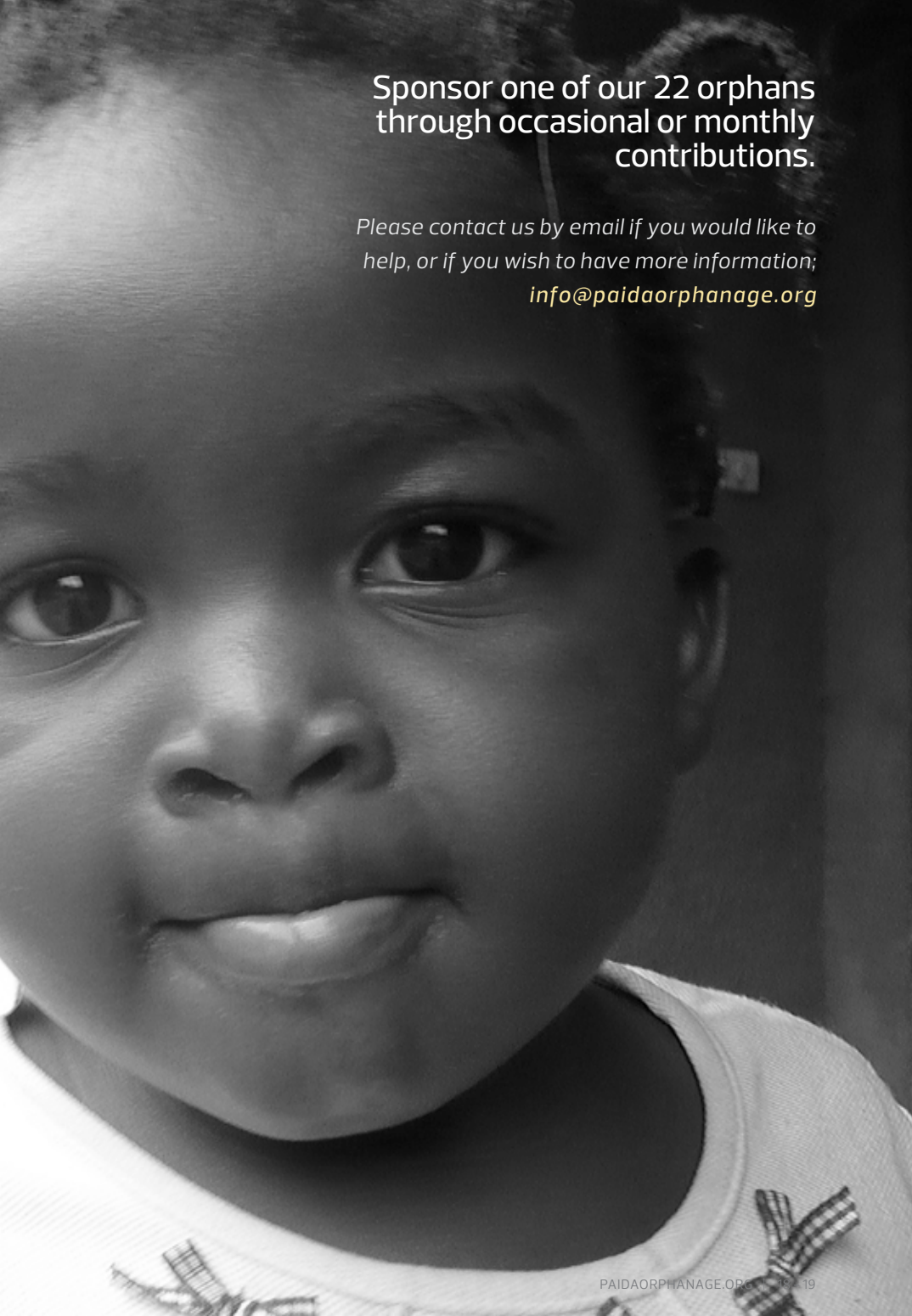
1. Project SPONSORSHIP “Sponsor an orphan”

Occasional or monthly contributions (ideally of USD 25 per month per child) will enable PaidOrphanage to significantly increase the quality of life of the orphans through better nutrition, health care and education

To maximize the effect of these vital funds, we have ensured that **no administrative costs are deducted from your contributions**¹. Each contribution made by our donors goes *directly* to support the children and the staff of the orphanage. The sponsor will be able to follow the development of the child sponsored, but his or her financial donations will also be used to purchase food and medicaments for all the orphans as required. The fact that the donation is not specific to a child avoids inequalities between the orphans. Nevertheless if a sponsored child is of school age, the donations will be used in the first place to guarantee his or her tuition fees.

On December 31st 2015, 8 out of our 22 orphans were being sponsored. The total income from the sponsorship of orphans amounted to CHF 2'334.35 in 2015.

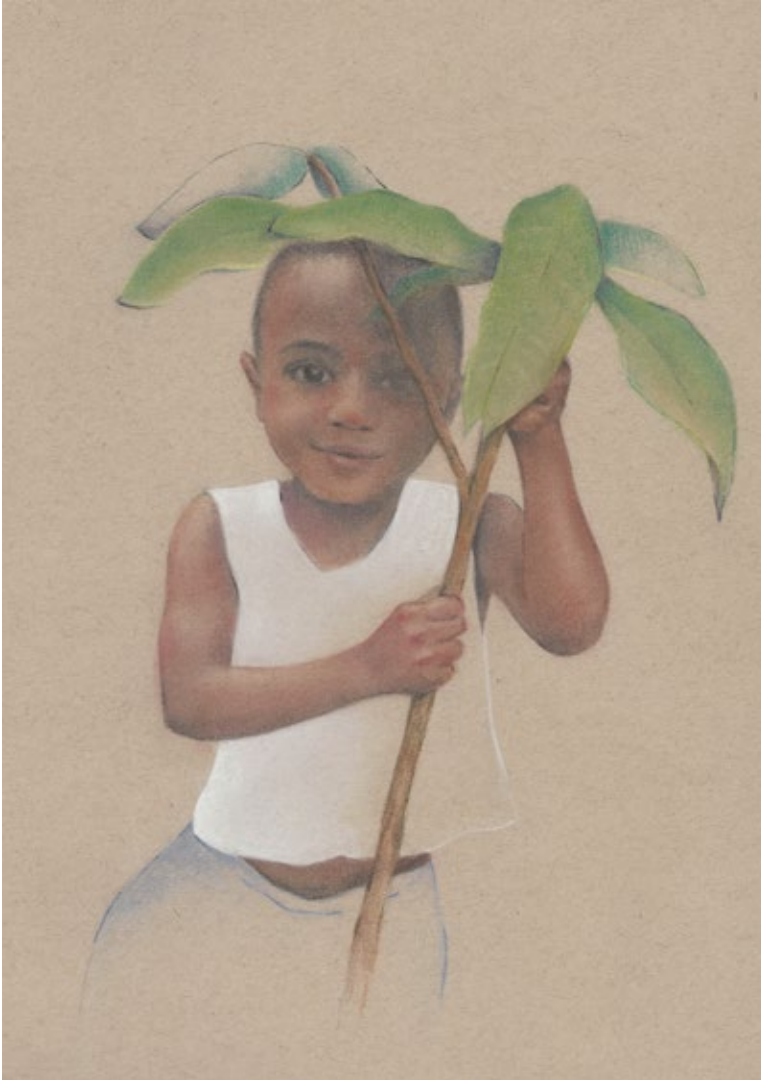
¹ All administrative costs (fees for transfer of funds, office cost and resources) are borne by Marie-Laure de Quina and Daniel Hoff.



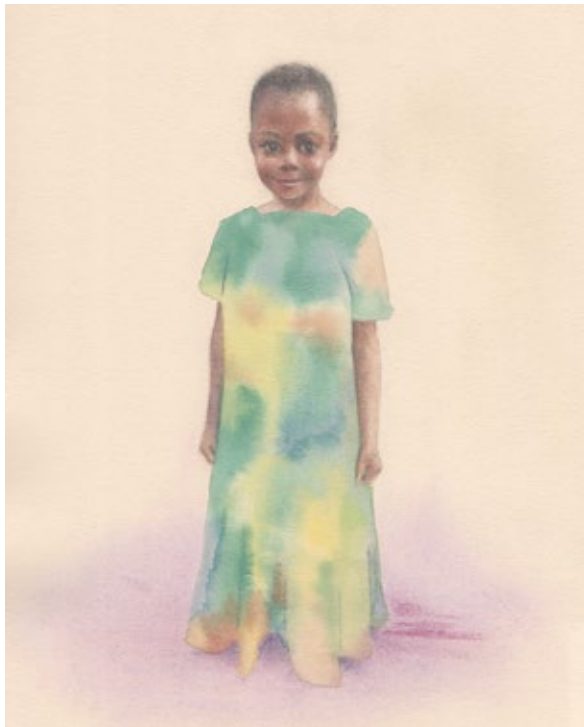
Sponsor one of our 22 orphans
through occasional or monthly
contributions.

*Please contact us by email if you would like to
help, or if you wish to have more information;
info@paidaorphange.org*

In 2015, PaidOrphanage was glad to receive the support of the Japanese artist Chie Nakano through her paintings of children, which have then been shared with our donors. Further information about the work of Chie can be found at www.chienakano.com.







2. Project BUNGULU

“Creation of new orphanage and school complex”

PaidaOrphanage is currently working on the construction of a new school for approximately 400 children from the surrounding areas. As soon as the school is finished, plans are to build an accommodation building for approximately 50 orphans up to the age of 18 years.

Land has already been provided and PaidaOrphanage has a dedicated budget and plan for the construction of the infrastructure provided by a local architect and approved by our Director for Projects and Engineering. Further details related to the new orphanage can be found under www.paidaorphanage.org.



Image of the plot from Google Earth

NEW SCHOOL

The new school will have 12 classrooms, an administrative building, one large room available either for studying or meetings, and a library. These 12 classrooms will allow us to welcome 400 students.

The total cost of building and equipping the school is estimated at 180'000

dollars.

Details of the layout of the school and orphanage as well as the cost estimate can be found in the Annual Report 2014 on our website www.paidaorphanage.org

Whereas the initially set objective was to start construction of the school in 2016, we are proud to report the following progress effective December 31st 2015:

- 4 classrooms completed;
- Sanitary installations completed;
- Construction of the administrative building is on-going.

Despite of inflated cost for materials due to increase insecurity in the area and more difficult logistics, we have been able to stay within the estimated cost for construction.

In 2015, we have sent four fund raising requests to institutional donors of which one has been approved. The other 3 have not yet responded to the request.

Potential Donor	Request Sent	Request Status	Return received	Grant
Commune de Collonge-Bellerive	May 2015	Approved	May 2015	CHF 4'000

In addition to the donation from the Commune de Collonge-Bellerive, CHF 1'145 has been raised in the form of individual donations, so in total we have obtained CHF 5'145 in 2015 to continue the construction of the school.

Details on the chronology of the construction can be found on our website www.paidaorphanage.org under the "*Rapport d'activité Projet Bungulu*".





The first two classrooms built are already being used by more than 30 students.



3. Progress against Key Performance Indicators

In order to benchmark our progress against targets, to enable future comparison to previous years' performance, and to facilitate the reporting, we would like to introduce the following key performance indicators:

Measure	Description	2015	
		Achievement (2016 Target)	Comments
Disposal income per child per month	Total average monthly income from sponsorships divided by total number of children in the orphanage	CHF 10.8 per child per month (CHF 12)	
Nursery attendance (age 4 and 5)	Total number of children in the orphanage age 4 or 5 who regularly attended nursery during the year divided by total number of children age 4 or 5	66% 6 out of 9 (100%)	3 kids could not go to nursery as there were not sufficient funds to pay nursery fees
School attendance (from age 6 onwards)	Total number of children in the orphanage above age 6 who regularly attended school during the year divided by total number of children above age 6	100% 3 out of 3 (100%)	
Completion of school project – Total progress	Amount budgeted for the completed constructions divided by total budget for school project (in USD)	28% (50%)	Excluding the progress of the administrative building which is almost completed.
Completion of school project – Budget discipline	Total expenditure for the completed constructions divided by the budgeted amount for the same constructions (in USD)	86% (<100%)	Actual spent was USD 43'223.57 compared to budget of USD 50'452.
School project fundraising	Total funds transferred during calendar year dedicated to the construction of the new school complex	CHF 14'000 (CHF 15'000)	

FINANCIAL REVIEW

Expenses (in CHF)				
	2015	2014	2013	2012
Total funds transferred to PaïdaOrphanage DRC	17'317.61	19'489.01	5'216.10	2'367.63
Cost of marketing / communication	532	787	751	382.17
Bank account fees	78	60	36	40
Fees for the transfer of funds to the DRC			229	105
Other				
TOTAL	17'927.61	20'339.01	6'232.10	2'894.80

Income (in CHF)				
	2015	2014	2013	2012
Donations related to the sponsorship of orphans	2'334.35	1'977.97	2'467.98	6'122.50
Donations related to the construction of an additional orphanage and school complex	5'144.80	15'210.30	7'170.40	
Unearmarked funding for PaïdaOrphanage	676		1'500.00	1'932.70
Additional donations to cover administrative cost of PaïdaOrphanage	1'580.22	2'453.21	980	539.97
Interest	0.78	2.10	4.79	4.57
TOTAL	9'736.15	19'643.58	12'123.10	8'599.74

SALDO	-8'191.46	-692.43	5'891	5'704.94
--------------	------------------	----------------	--------------	-----------------

We are proud of having very low administrative cost (less than 3.5% of total expenditures in 2015)².

Despite a negative saldo, the cash balance at 31 December 2015 is USD 9'866 as it takes into account the balance carried forward from 2011 to 2014.



² All administrative costs (e.g. transfer of funds, office costs and resources) are borne by Marie-Laure de Quina and Daniel Hoff, indicated as “unearmarked funding for Paidá Orphanage” in the income table.





OUTLOOK

Whereas in 2015 we have not obtained as much financial support as in previous years, we are still very happy with the progress locally, i.e. the management of the orphanage and the construction of the new school.

In 2016, we aim at finalizing phase 2 of the school construction which would bring us to 50% completion of the project. Given that our initial objective was to start construction in 2016, this would be a remarkable achievement, even more so, if we can continue to maintain our current budget discipline. This would also enable us to almost double the current capacity of the school from 94 pupils to approximately 200.

In future we will also begin to incorporate a review of the performance of the school into our activity, including a review of the school income and expenses, review teacher tenure, availability of school materials, among others.

Further, we will aim at launching the funding request for phase 3 of the school construction towards the beginning of 2017. We hope that the current progress will show potential donors how serious and reliable we are about advancing and finalizing this project.

Despite of ups and downs with regards to security, health, funding etc., we have no doubt that the persistent effort of PaidaOrphanage and all supporters will have a lasting positive impact on the region. One day we will see a safer and more stable North-Kivu to which all supporters of PaidaOrphanage have contributed in one way or another.

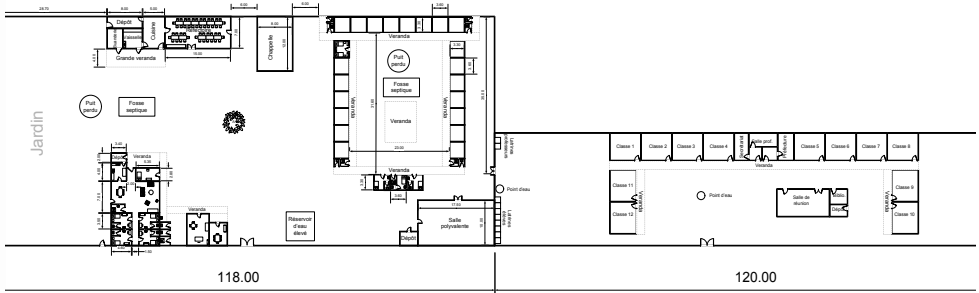
AUDITOR'S COMMENTS

On November 19th 2016, Delphine Menezes Cordeiro and Martin Keller reviewed the annual report and in particular the annual financial statement and hereby acknowledge the correctness and completeness of the year-end reporting. The audit committee confirms that the bookkeeping was conducted in a careful and transparent way. There were no problems to address. If the reader wishes to obtain additional information regarding the financial statement, he/she can contact the audit committee for more details (under info@paidaorphnanage.org).

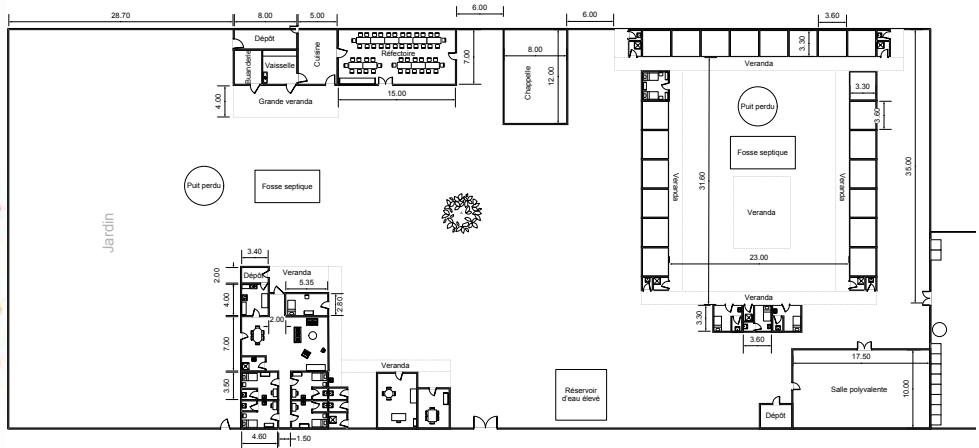


ANNEXES

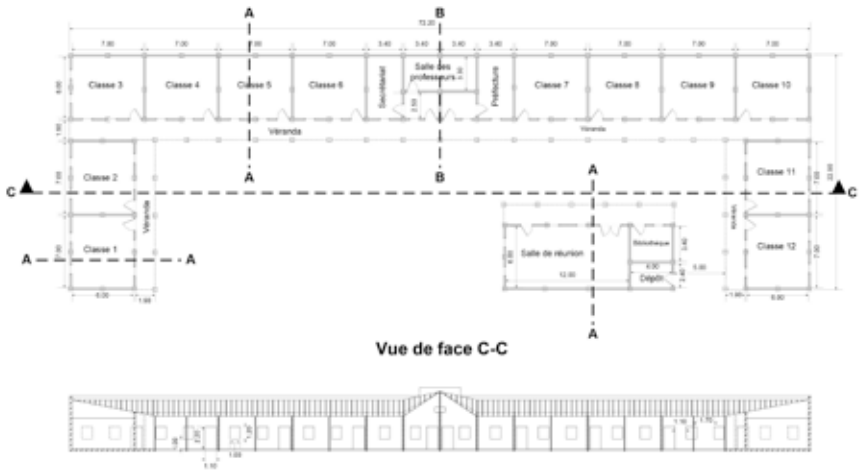
A) Detail of layout of the new school and orphanage constructions



General overview plan of the proposed orphanage and school complex



Plan of the boarding school residence and dormitory



Plan of the school administration block and classrooms

B) Detail of estimates for school

USD	Classrooms 1, 2, 3 Toilets	Classrooms 4, 5, 6 Administration area	Classrooms 10, 11, 12 Library	Classrooms 7, 8, 9 Playing area	Total for complete school
Cost for tools and equipment	1'115	970	990	1'115	4'190
Cost for construction materials	25'877	29'785	34'490	28'042	118'195
Labor cost	7'637	7'889	9'165	7'950	32'640
Cost for architect supervision	2'579	2'899	3'180	2'668	11'326
Unforeseen (5% of material, labor and supervision costs)	1'805	2'029	2'342	1,993	8'108
Cost for interior equipment (furniture)	1'305	1'475	1'465	1'305	5'550
Total	40'318	45'046	51'632	43'013	180'009

C) Chronology of the construction (in French)

Travaux effectués pour réaliser 2 salles de cours (1 et 2) en 2013	Du	Au
Transport des matériaux de construction (sable et moellon)	13-May	16-May
Implantation et terrassement des fondations	17-May	19-May
Fondations en moellon et ciment y compris chape en brique et ciment	20-May	29-May
Fondation en ciment	30-May	1-Jun
Murs en brique	2-Jun	12-Jun
Coffrage et ferrailage des colonnes, poteaux et chaînage	13-Jun	17-Jun
Coulage du béton des colonnes, poteaux et chaînage	18-Jun	21-Jun
Compactage des fondations au remblais terrassé	22-Jun	24-Jun
Charpente	25-Jun	30-Jun
Encastrement de la charpente avec briques	1-Jul	8-Jul
Tôlage	9-Jul	10-Jul
Carrelage des salles	11-Jul	16-Jul
Faux plafond	17-Jul	18-Jul
Crépissage murs intérieurs	19-Jul	23-Jul
Crépissage murs extérieurs	24-Jul	28-Jul
Fixation des triplex	29-Jul	1-Aug
Cimentage des sols	2-Aug	8-Aug
Fixation portes et fenêtres	9-Aug	10-Aug
Fixation WC et plomberie	11-Aug	20-Aug

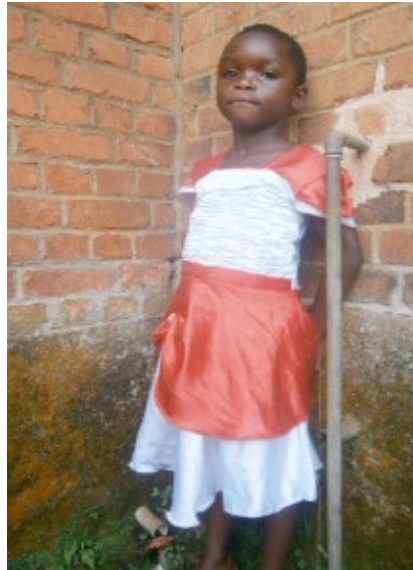
Travaux effectués pour réaliser 2 salles de cours (3 et 4) en 2014	Du	Au
Transport des matériaux de construction (sable et moellon)	6-Sep	8-Sep
Implantation et terrassement des fondations	9-Sep	10-Sep
Fondations en moellon et ciment y compris chape en brique et ciment	11-Sep	19-Sep
Fondation en ciment	19-Sep	20-Sep
Murs en brique	22-Sep	30-Sep

Travaux effectués pour réaliser 2 salles de cours (3 et 4) en 2014	Du	Au
Coffrage et ferrailage des colonnes, poteaux et chainage	1-Oct	4-Oct
Coulage du béton des colonnes, poteaux et chainage	5-Oct	6-Oct
Compactage des fondations au remblais terrassé	7-Oct	9-Oct
Charpente	10-Oct	14-Oct
Encastrement de la charpente avec briques	15-Oct	22-Oct
Tôlage	23-Oct	24-Oct
Carrelage des salles	25-Oct	29-Oct
Faux plafond	31-Oct	1-Nov
Crépissage murs intérieurs	3-Nov	6-Nov
Crépissage murs extérieurs	7-Nov	10-Nov
Fixation des triplex	11-Nov	13-Nov
Cimentage des sols	14-Nov	19-Nov
Fixation portes et fenêtres	20-Nov	20-Nov

D) Names and pictures of sponsored children



Marie-Luc Kavira



Dorcas Kakule



Sylvestre Kambale



Martinette Kavira



Louange Kahindo



Harmand Muhindo



Marie-Louise Kavira



Euloge Kambale

E) List of children present in the orphanage on December 2015

No.	Name, Surname	Date of birth	Age
1	Marie-Louise KAVIRA MANYINDO	20/07/07	8,4
2	Archange MUHINDO KAMBALO KAKULE KISUVA	31/08/08	7,3
3	Dorcas KAVIRA MUHIRA KAKULE	31/08/08	7,3
4	Marie-Luc KAVIRA NTUMELI	18/10/09	6,2
5	Louange KAHINDO KAVUNGA	03/03/10	5,8
6	Harmand MUHINDO MUPIRI MUPIKA	25/09/10	5,3
7	Martinette KAVIRA TSONGO	11/11/10	5,1
8	Rose MADAWA EVHEUBO	26/03/11	4,8
9	Euloge KAMBALE SAMBILI	09/07/11	4,5
10	Marie-Jeanne KAVIRA KAKULE	27/07/11	4,4
11	Angelique ANZIANI MANDULASI	21/07/11	4,4
12	Sylvestre/Sylvain KAMBALE KASIHIRO	25/11/11	4,1

No.	Name, Surname	Date of birth	Age
13	Hilaire KASEREKA MUHINDO KAMBALE KAMATE	14/01/12	4,0
14	Consolée KAHINDO MUTHAHI	20/01/12	3,9
15	Elisabeth KATUNGU KERA	04/07/12	3,5
16	Pamela NGURU WAYIRE	27/07/12	3,4
17	Marguerite CHECHELA	Not known	NA
18	Julien KAKULE TSONGO KIBWANA	Not known	NA
19	Josias Prince NDOVYA SIKULI	17/10/13	2,2
20	Josaphat Précieux NGURU SIKULI	17/10/13	2,2
21	Grace KATUNGU KYATSANDIRE	27/11/13	2,1
22	Marie des Anges DEDASILOVE	26/07/14	1,4

Four children have left the orphanage since last year.

The twins Archange and Dorcas have been adopted and, after a long administrative process, they have reached their new family in Italy. Elisabeth has been reintegrated into her wider family and is now in a village that is relatively far away from Paida. Rose has been adopted by a family in Beni and will regularly be visited to ensure her well being.

CONTACTS

PaidaOrphanage

Daniel Hoff and Marie-Laure de Quina
Av. Lamartine 24B - 1203 Geneva
Switzerland

[**info@paidaorphanage.org**](mailto:info@paidaorphanage.org)

[**www.paidaorphanage.org**](http://www.paidaorphanage.org)





